



NISSAN MY24 JUKE HYBRID

PRODUCT & PRICING GUIDE

October 2024

GRADE SPECIFICATION

SV (Entry Level)



SAFETY & SECURITY

- Driver and Passenger front, side & curtain airbags
- Rear ISO-FIX + Top Tether
- ABS + EBD + Brake Assist
- Height adjustable seat belts
- Seat belts reminder (for all seating positions)
- Vehicle Dynamic Control + Traction Control + Hill Start Assist + Active Trace Control + Active Ride Control
- Emergency Call
- Cruise Control & Speed Limiter
- Intelligent Emergency Braking with Pedestrian & Cyclist Recognition
- Intelligent Lane Intervention and Warning
- High Beam Assist
- Driver Drowsiness & Attention Alert
- Traffic Sign Recognition
- Tyre Pressure Monitoring System
- Peripheral Alarm
- Child lock + Central door lock switch + superlocking
- Idle Stop & Start system

EXTERIOR

- Body colour electrically adjustable exterior mirrors with integrated turn signal
- Grained black plastic exterior door handles, bumper finishers & mouldings
- Driver door key lock cylinder
- Push-push type fuel lid
- Shark fin antenna
- 17" 'Sakura' flex wheel
- Automatic light with "follow me home",
- Automatic Hazard Signal (Emergency Stop signal)
- LED lamps (FR & RR & DTRL & RR Fog)
- Hybrid Badge

INTERIOR

- Manual dimming interior rear-view mirror
- Driver & Passenger vanity mirrors
- Grey headliner, without assist grip handles
- Cloth Seat Trim
- Satin chrome inside door handle
- Welcome light
- Front & Rear room lights (no LED)
- Luggage room light
- Glove box with light
- Telescopic steering wheel with manual tilt
- Multifunction steering wheel
- Front monoform sporty design seat with integrated headrest
- Driver 6 ways adjustable seat: sliding/reclining/height)
- Passenger 4 ways adjustable seat: sliding/reclining
- Rear seat: 60/40 folding flat to floor, 3 separated headrests
- Center console with integrated arm rest
- Melange fabric + black PVC accent dashboard
- Cup holder Fr x2 in console
- Bottle Holder Front & Rear doors

OPTIONS

COMFORT PACK - €600

- Auto A/C
- Heated & Auto folding mirrors
- Heated Front Seats

Rear Parking Sensors & RearView Monitor

METALLIC PAINT - €600

Optional extras may impact fuel consumption, CO2 & Road Tax figures

TECHNOLOGY

- Auto Air Conditioning
- 12.3" touch screen display with Radio, DAB,, Bluetooth, & Voice Recognition
- 4 Speakers
- Wireless Android Auto & Apple CarPlay
- 7" Colour TFT combimeter screen
- Outside temperature thermometer
- Electric windows x4
- One Touch Driver Window
- iKey with Engine Start/Stop Button
- Electric Parking brake with auto hold function
- Paddle shift for DCT
- 2x Front USB (type A + type C) + 12V socket
- Rear view monitor (Rear camera)
- Pre-wiring for accessory towing device
- Regenerative Braking

ENGINE

Engine	HP	CO2	FUEL CONS.
1.6L Petrol Hybrid	143	108	4.8L

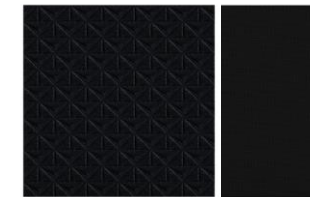
Fuel Consumption & CO2s are tested under WLTP.

PRICING

Variant	RRP	ROAD TAX
Hybrid	€35,850	€180

**Prices exclude dealer delivery related charges*

INTERIOR TRIM



Black Embossed Fabric /
Black Fabric

WHEELS



17" Flex Wheels



GRADE SPECIFICATION

SV PREMIUM (SV +)



SAFETY & SECURITY

- Driver and Passenger front, side & curtain airbags
- Rear ISO-FIX + Top Tether
- ABS + EBD + Brake Assist
- Height adjustable seat belts
- Seat belts reminder (for all seating positions)
- Vehicle Dynamic Control + Traction Control + Hill Start Assist + Active Trace Control + Active Ride Control
- Emergency Call
- Cruise Control & Speed Limiter
- Intelligent Emergency Braking with Pedestrian & Cyclist Recognition
- Intelligent Lane Intervention and Warning
- High Beam Assist
- Driver Drowsiness & Attention Alert
- Traffic Sign Recognition
- Tyre Pressure Monitoring System
- Peripheral Alarm
- Child lock + Central door lock switch + superlocking
- Idle Stop & Start system

EXTERIOR

- Body colour electrically **Foldable & Heated** exterior mirrors with integrated turn signal
- Grained black plastic bumper finishers & mouldings
- **Body Coloured Door Handles**
- Driver door key lock cylinder
- Push-push type fuel lid
- Shark fin antenna
- **17" Diamond Cut Alloy wheel**
- Automatic light with "follow me home",
- Automatic Hazard Signal (Emergency Stop signal)
- LED lamps (FR & RR & DTRL & RR Fog) with manual leveliser
- **Privacy Glass**
- **Rain Sensing Wipers**
- **Front Fog Lamps**

INTERIOR

- **Auto dimming frameless interior rear-view mirror**
- Driver & Passenger vanity mirrors
- **Black Headliner with assist grips & coat hanger**
- Cloth Seat Trim
- Satin chrome inside door handle
- Welcome light
- Front & Rear room lights (no LED)
- Luggage room light
- Glove box with light
- Telescopic steering wheel with manual tilt
- Multifunction steering wheel
- Front monoform sporty design seat with integrated headrest
- Driver 6 ways adjustable seat: sliding/reclining/height)
- Passenger 4 ways adjustable seat: sliding/reclining
- Rear seat: 60/40 folding flat to floor, 3 separated headrests
- Center console with integrated arm rest
- Melange fabric + black PVC accent dashboard
- Cup holder Fr x2 in console
- Bottle Holder Front & Rear doors
- **Luggage Board**

OPTIONS

COLD PACK

- Heated Windshield
- Heated Steering Wheel
- Heated Front Seats
- Passenger Height Adjustable Seat

2 TONE PAINT - €900

METALLIC PAINT - €600

Optional extras may impact fuel consumption, CO2 & Road Tax figures

TECHNOLOGY

- **Auto** Air Conditioning
- 12.3" touch screen display with Radio, DAB,, Bluetooth, & Voice Recognition
- 4 Speakers
- **Sat Nav**
- Wireless Android Auto & Apple CarPlay
- 7" Colour TFT combimeter screen
- Outside temperature thermometer
- Electric windows x4
- One Touch Driver Window & **passenger iKey with walk away lock approach unlock**
- **Engine Start/Stop Button**
- Electric Parking brake with auto hold function
- Paddle shift for DCT
- 2x Front USB (type A + type C) + 12V socket & **2 Rear USB (Type A & Type C)**
- Rear view monitor (Rear camera)
- **Front & Rear Parking Sensors**
- **Drive modes (ECO, Sport, Normal)**
- Pre-wiring for accessory towing device
- **Wireless Charger**

ENGINE

Engine	HP	CO2	FUEL CONS.
1.6L Petrol Hybrid	143	109	4.8L

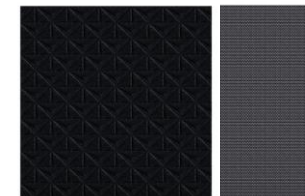
Fuel Consumption & CO2s are tested under WLTP.

PRICING

Variant	RRP	ROAD TAX
Hybrid	€36,850	€180

**Prices exclude dealer delivery related charges*

INTERIOR TRIM



Cloth + Synthetic leather

WHEELS



17" Diamond Cut Alloys



GRADE SPECIFICATION

N DESIGN (SV Premium +)



SAFETY & SECURITY

- Driver and Passenger front, side & curtain airbags
- Rear ISO-FIX + Top Tether
- ABS + EBD + Brake Assist
- Height adjustable seat belts
- Seat belts reminder (for all seating positions)
- Vehicle Dynamic Control + Traction Control + Hill Start Assist + Active Trace Control + Active Ride Control
- Emergency Call
- Cruise Control & Speed Limiter
- Intelligent Emergency Braking with Pedestrian & Cyclist Recognition
- Intelligent Lane Intervention and Warning
- High Beam Assist
- Driver Drowsiness & Attention Alert
- Traffic Sign Recognition
- Tyre Pressure Monitoring System
- Peripheral Alarm
- Child lock + Central door lock switch + superlocking
- Idle Stop & Start system

EXTERIOR

- Body colour electrically Foldable & Heated exterior mirrors with integrated turn signal
- Grained black plastic bumper finishers & mouldings
- Body Coloured Door Handles
- Driver door key lock cylinder
- Push-push type fuel lid
- Shark fin antenna
- **19" Alloy wheel**
- Automatic light with "follow me home",
- Automatic Hazard Signal (Emergency Stop signal)
- LED lamps (FR & RR & DTRL & RR Fog) with manual leveliser adjustment
- Privacy Glass
- Rain Sensing Wipers
- Front Fog Lamps
- **Satin Grey Exterior Finishers**
- **2 Tone paint w/ black, red or silver roof**
- **N-DESIGN badge on tail gate**

INTERIOR

- Auto dimming frameless interior rear-view mirror
- Driver & Passenger vanity mirrors
- Black Headliner with assist grips & coat hanger
- Cloth Seat Trim
- Satin chrome inside door handle
- Welcome light
- Front & Rear room lights (no LED)
- Luggage room light
- Glove box with light
- Telescopic steering wheel with manual tilt
- Multifunction steering wheel
- Front monoform sporty design seat with integrated headrest
- Driver 6 ways adjustable seat: sliding/reclining/height)
- Passenger 4 ways adjustable seat: sliding/reclining
- Rear seat: 60/40 folding flat to floor, 3 separated headrests
- Center console with integrated arm rest
- Melange fabric + black PVC accent dashboard
- Cup holder Fr x2 in console
- Bottle Holder Front & Rear doors
- Luggage Board

OPTIONS

COLD PACK

- Heated Windshield
- Heated Steering Wheel
- Heated Front Seats
- Passenger Height Adjustable Seat

MIDNIGHT INTERIOR PACK - €2,200

- Leather/Alcantara/PVC Black Seat material
- BOSE Personal with 10 Speakers

Optional extras may impact fuel consumption, CO2 & Road Tax figures

TECHNOLOGY

- Auto Air Conditioning
- 12.3" touch screen display with Radio, DAB,, Bluetooth, & Voice Recognition
- 4 Speakers
- Sat Nav
- Wireless Android Auto & Apple CarPlay
- 7" Colour TFT combimeter screen
- Outside temperature thermometer
- Electric windows x4
- One Touch Driver Window & passenger iKey with walk away lock approach unlock
- Engine Start/Stop Button
- Electric Parking brake with auto hold function
- Paddle shift for DCT
- 2x Front USB (type A + type C) + 12V socket & 2 Rear USB (Type A & Type C)
- Rear view monitor (Rear camera)
- Front & Rear Parking Sensors
- Drive modes (ECO, Sport, Normal)
- Pre-wiring for accessory towing device
- Wireless Charger

ENGINE

Engine	HP	CO2	FUEL CONS.
1.6L Petrol Hybrid	143	111	4.9L

Fuel Consumption & CO2s are tested under WLTP.

PRICING

Variant	RRP	ROAD TAX
Hybrid	€38,850	€190

**Prices exclude dealer delivery related charges*

INTERIOR TRIM



Optional "MIDNIGHT" Interior Pack
**See SV Premium for standard N DESIGN trim*

WHEELS



19" Alloys



GRADE SPECIFICATION

N SPORT (SV Premium +)



SAFETY & SECURITY

- Driver and Passenger front, side & curtain airbags
- Rear ISO-FIX + Top Tether
- ABS + EBD + Brake Assist
- Height adjustable seat belts
- Seat belts reminder (for all seating positions)
- Vehicle Dynamic Control + Traction Control + Hill Start Assist + Active Trace Control + Active Ride Control
- Emergency Call
- Cruise Control & Speed Limiter
- Intelligent Emergency Braking with Pedestrian & Cyclist Recognition
- Intelligent Lane Intervention and Warning
- High Beam Assist
- Driver Drowsiness & Attention Alert
- Traffic Sign Recognition
- Tyre Pressure Monitoring System
- Peripheral Alarm
- Child lock + Central door lock switch + superlocking
- Idle Stop & Start system

EXTERIOR

- Body colour electrically **Foldable & Heated** exterior mirrors with integrated turn signal
- Grained black plastic bumper finishers & mouldings
- Body Coloured Door Handles
- Driver door key lock cylinder
- Push-push type fuel lid
- Shark fin antenna
- **19" Black Akari Alloy wheel**
- Automatic light with "follow me home",
- Automatic Hazard Signal (Emergency Stop signal)
- LED lamps (FR & RR & DTRL & RR Fog) with manual leveliser adjustment
- Privacy Glass
- Rain Sensing Wipers
- Front Fog Lamps
- **Black Exterior Finishers**
- **2 Tone paint w/ black Roof**
- **N-SPORT badge on tail gate**

INTERIOR

- Auto dimming frameless interior rear-view mirror
- Driver & Passenger vanity mirrors
- Black Headliner with assist grips & coat hanger
- Cloth Seat Trim
- Satin chrome inside door handle
- Welcome light
- Front & Rear room lights (no LED)
- Luggage room light
- Glove box with light
- Telescopic steering wheel with manual tilt
- Multifunction steering wheel
- Front monoform sporty design seat with integrated headrest
- Driver 6 ways adjustable seat: sliding/reclining/height)
- Passenger 4 ways adjustable seat: sliding/reclining
- Rear seat: 60/40 folding flat to floor, 3 separated headrests
- Center console with integrated arm rest
- Melange fabric + black PVC accent dashboard
- Cup holder Fr x2 in console
- Bottle Holder Front & Rear doors
- Luggage Board

OPTIONS

COLD PACK

- Heated Windshield
- Heated Steering Wheel
- Heated Front Seats
- Passenger Height Adjustable Seat

ICON INTERIOR PACK - €2,200

- Yellow Alcantara & Black Technical Grained PVC Seat material with Yellow Stitching
- BOSE Personal with 10 Speakers

Optional extras may impact fuel consumption, CO2 & Road Tax figures

TECHNOLOGY

- Auto Air Conditioning
- 12.3" touch screen display with Radio, DAB,, Bluetooth, & Voice Recognition
- 4 Speakers
- Sat Nav
- Wireless Android Auto & Apple CarPlay
- 7" Colour TFT combimeter screen
- Outside temperature thermometer
- Electric windows x4
- One Touch Driver Window & passenger ikey with walk away lock approach unlock
- Engine Start/Stop Button
- Electric Parking brake with auto hold function
- Paddle shift for DCT
- 2x Front USB (type A + type C) + 12V socket & 2 Rear USB (Type A & Type C)
- Rear view monitor (Rear camera)
- Front & Rear Parking Sensors
- Drive modes (ECO, Sport, Normal)
- Pre-wiring for accessory towing device
- Wireless Charger

ENGINE

Engine	HP	CO2	FUEL CONS.
1.6L Petrol Hybrid	143	111	4.9L

Fuel Consumption & CO2s are tested under WLTP.

PRICING

Variant	RRP	ROAD TAX
Hybrid	€39,150	€190

**Prices exclude dealer delivery related charges*

INTERIOR TRIM



Optional "ICON" Interior Pack
**See SV Premium for standard N-SPORT trim*

WHEELS



19" Black "Akari" Alloys



GRADE SPECIFICATION

SVE (SV Premium +)



SAFETY & SECURITY

- Driver and Passenger front, side & curtain airbags
- Rear ISO-FIX + Top Tether
- ABS + EBD + Brake Assist
- Height adjustable seat belts
- Seat belts reminder (for all seating positions)
- Vehicle Dynamic Control + Traction Control + Hill Start Assist + Active Trace Control + Active Ride Control
- Emergency Call
- Cruise Control & Speed Limiter
- Intelligent Emergency Braking with Pedestrian & Cyclist Recognition
- Intelligent Lane Intervention and Warning
- High Beam Assist
- Driver Drowsiness & Attention Alert
- Traffic Sign Recognition
- Tyre Pressure Monitoring System
- Peripheral Alarm
- Child lock + Central door lock switch + superlocking
- Idle Stop & Start system
- **Rear Cross Traffic Alert**
- **ProPILOT - DCT**
- **ProPILOT (ICC & LKA) - Manual**

EXTERIOR

- Body colour electrically foldable & heated exterior mirrors with integrated turn signal
- Grained black plastic bumper finishers & mouldings
- Body Coloured Door Handles
- Driver door key lock cylinder
- Push-push type fuel lid
- Shark fin antenna
- **19" Full Black SVE Alloy wheel**
- Automatic light with "follow me home",
- Automatic Hazard Signal (Emergency Stop signal)
- LED lamps (FR & RR & DTRL & RR Fog) with manual leveliser adjustment
- Privacy Glass
- Rain Sensing Wipers
- Front Fog Lamps

INTERIOR

- Auto dimming frameless interior rear-view mirror
- Driver & Passenger vanity mirrors
- Black Headliner with assist grips & coat hanger
- **Synthetic Leather Trim with seat back pockets**
- Satin chrome inside door handle
- Welcome light
- Front & Rear room lights (no LED)
- Luggage room light
- Glove box with light
- Telescopic steering wheel with manual tilt
- Multifunction steering wheel
- Front monoform sporty design seat with integrated headrest
- Driver 6 ways adjustable seat: sliding/reclining/height)
- Passenger 4 ways adjustable seat: sliding/reclining
- Rear seat: 60/40 folding flat to floor, 3 separated headrests
- Center console with integrated arm rest
- Melange fabric + black PVC accent dashboard
- Cup holder Fr x2 in console
- Bottle Holder Front & Rear doors
- Luggage Board

OPTIONS

COLD PACK

- Heated Windshield
- Heated Steering Wheel
- Heated Front Seats
- Passenger Height Adjustable Seat

BOSE PERSONAL SOUND SYSTEM - €1,100

METALLIC PAINT - €600

2 TONE PAINT - €900

TECHNOLOGY

- Auto Air Conditioning
- 12.3" touch screen display with Radio, DAB,, Bluetooth, & Voice Recognition
- 4 Speakers
- Sat Nav
- Wireless Android Auto & Apple CarPlay
- 7" Colour TFT combimeter screen
- Outside temperature thermometer
- Electric windows x4
- One Touch Driver Window & passenger
- iKey with walk away lock approach unlock
- Engine Start/Stop Button
- Electric Parking brake with auto hold function
- Paddle shift for DCT
- 2x Front USB (type A + type C) + 12V socket & 2 Rear USB (Type A & Type C)
- **Around view monitor with MOD**
- Front & Rear Parking Sensors
- Drive modes (ECO, Sport, Normal)
- Pre-wiring for accessory towing device
- Wireless Charger

ENGINE

Engine	HP	CO2	FUEL CONS.
1.6L Petrol Hybrid	143	111	4.9L

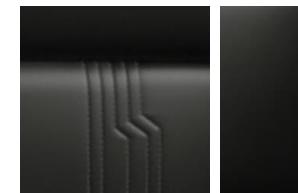
Fuel Consumption & CO2s are tested under WLTP.

PRICING

Variant	RRP	ROAD TAX
Hybrid	€39,850	€190

**Prices exclude dealer delivery related charges*

INTERIOR TRIM



Black Synthetic Leather

WHEELS



19" Black SVE Alloys



COLOURS



PEARL WHITE



PEARL - €600

FUJI SUNSET RED



METALLIC - €600

MAGNETIC BLUE



METALLIC - €600

CERAMIC GREY



METALLIC - €600

GUN GREY



METALLIC - €600

YELLOW



METALLIC - €600

BURGUNDY



METALLIC - €600

BLADE SILVER



METALLIC - €600

BLACK



METALLIC - €600

RED



SOLID - €0

WHITE



SOLID - €0

TWO TONE PAINT* - €900

ROOF COLOUR

BLACK



SILVER



RED



ROOF COLOUR

PEARL WHITE
BLADE SILVER
GUN GREY
BURGUNDY

FUJI SUNSET RED
CERAMIC GREY
YELLOW
MAGNETIC BLUE

BLACK
BURGUNDY
FUJI SUNSET RED
MAGNETIC BLUE

SILVER
GUN GREY
BLACK
CERAMIC GREY

BODY COLOURS

BODY COLOURS

*Sharkfin Antenna is always black

DIMENSIONS



D - OVERALL HEIGHT

1,593

MM



A - OVERALL LENGTH

4,210

MM

B - WHEELBASE

2,636

MM

C - OVERALL WIDTH

1,983

MM

(WITH OPENED MIRRORS)



BOOT CAPACITY

422

1,477

MM

A - BOOT SPACE MAX. LENGTH

1,249

MM

B - BOOT SPACE MAX. WIDTH



Please note that every effort has been made to ensure that the contents of this publication are accurate and up-to-date at time of publication (October 2024). Nissan Ireland reserves the right to amend specification, colours, trims, options and pricing etc. without notice. This guide is not a contractual document or offer of sale. Images contained within are for illustration purposes only. Please contact your local Nissan dealer to discuss the latest product and pricing information.